

S. Antonio Valfurva, 19 ottobre 2018

## Il giorno della marmotta I difficili conteggi di un roditore semifossorio



Museo delle Scienze  
**MUSE**

Filippo Zibordi, Franco Rizzoli, Luca Corlatti, Luca Pedrotti

Diagram illustrating the effects of various factors on a meadow ecosystem. The background shows a meadow with green grass, purple thistles, and yellow flowers. In the foreground, two groundhogs are visible near a sandy burrow. Red arrows point from the left-side boxes to the right-side boxes.

**pascolo**

modifiche alle comunità vegetali

**specie  
preda**

interazioni con altri erbivori

**vettore di  
parassiti e  
malattie**

comunità di predatori

proprietà del suolo

**scavo**

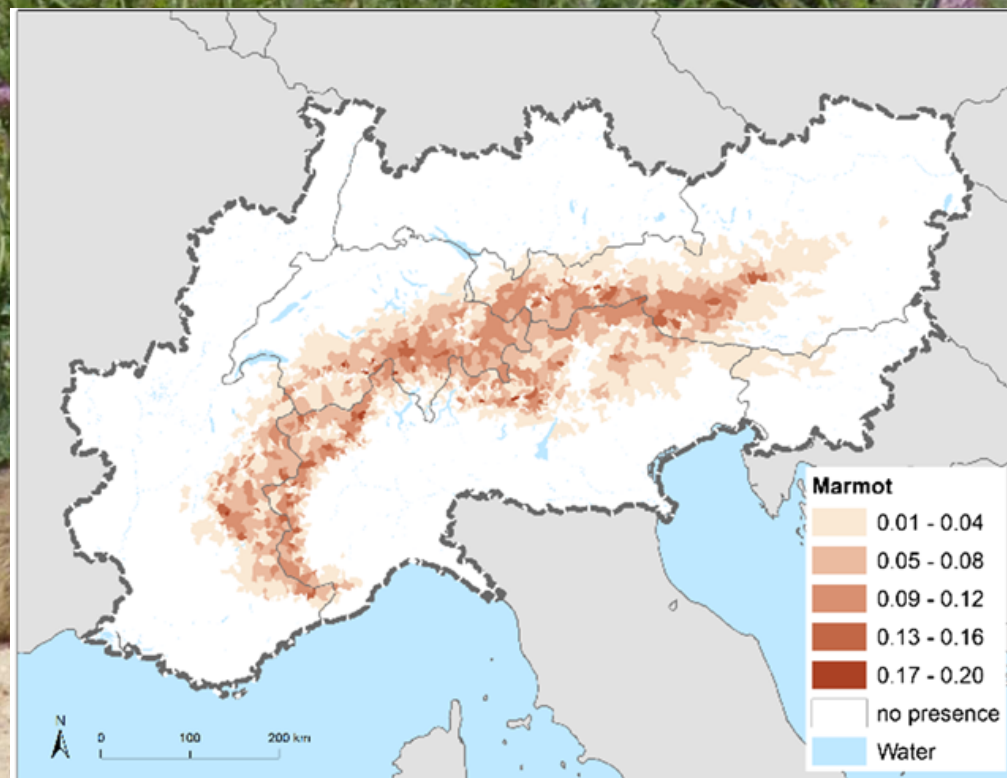
habitat per altre specie animali

habitat per specie vegetali

valore estetico

valore simbolico

valore turistico



Landscape Ecol  
<https://doi.org/10.1007/s10980-018-0628-x>

RESEARCH ARTICLE

**Symbolic species as a cultural ecosystem service  
in the European Alps: insights and open issues**

Uta Schirpke · Claude Meisch · Ulrike Tappeiner



# Finalità

## ➤ Sopravvivenza

✓ risposta al *climate change*?

nature

Vol 466 | 22 July 2010 | doi:10.1038/nature09210

### LETTERS

#### **Coupled dynamics of body mass and population growth in response to environmental change**

Arpat Ozgul<sup>1</sup>, Dylan Z. Childs<sup>2</sup>, Madan K. Oli<sup>3</sup>, Kenneth B. Armitage<sup>4</sup>, Daniel T. Blumstein<sup>5</sup>, Lucretia E. Olson<sup>5</sup>, Shripad Tuljapurkar<sup>6</sup> & Tim Coulson<sup>1</sup>

*Ecology*, 94(3), 2013, pp. 580–586  
© 2013 by the Ecological Society of America

#### Decreasing litter size of marmots over time: a life history response to climate change?

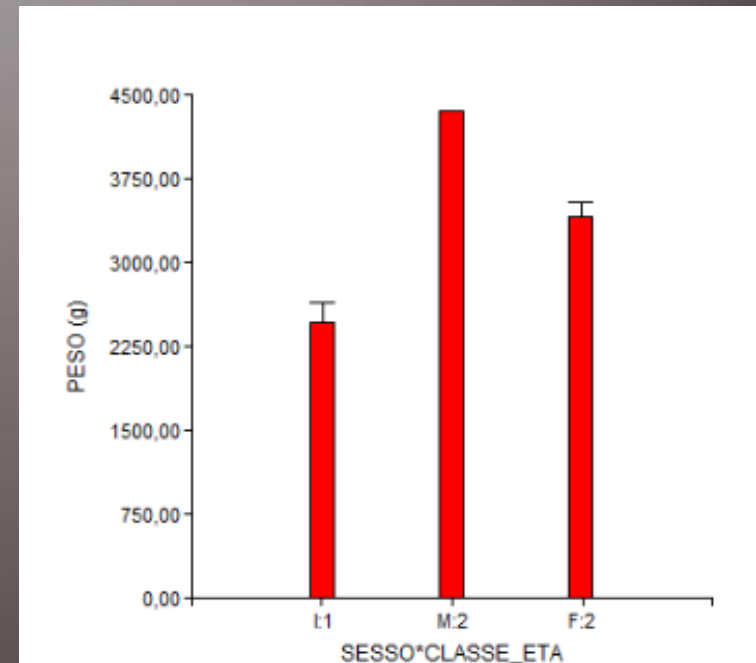
MARION TAFANI,<sup>1</sup> AURÉLIE COHAS, CHRISTOPHE BONENFANT, JEAN-MICHEL GAILLARD, AND DOMINIQUE ALLAINÉ  
*Université de Lyon, F-69000, Lyon; Université Lyon 1; CNRS, UMR5558, Laboratoire de Biométrie et Biologie Évolutive, F-69622 Villeurbanne, France*

## ➤ Abbondanza

✓ specie territoriale, sociale, semifossoria

# Obiettivo

definizione di un metodo "speditivo" ma robusto di valutazione quantitativa e della distribuzione delle popolazioni



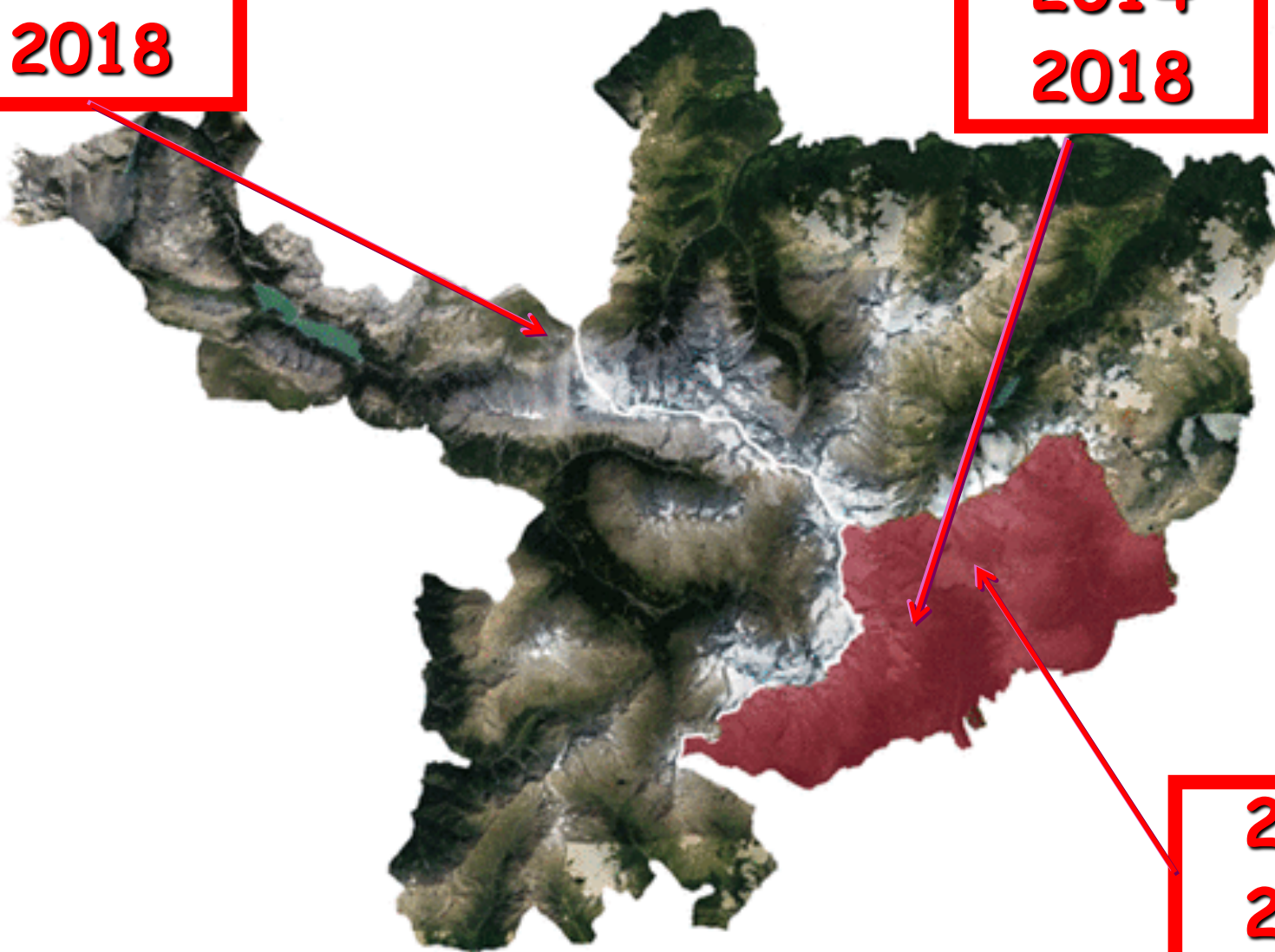
... unitamente alla caratterizzazione dei parametri demografici di alcuni nuclei campione di marmotta

# Aree di studio

Praterie di alta quota  
(2100-2650 m slm) ~40/60 ha

**2018**

**2014  
2018**



**2014  
2015**

# Le catture

all'uscita delle marmotte dalla tana  
(fine aprile- prima metà di maggio): **8-11 gg**



**20 trappole Tomahawk + lacci**









PARCO NAZIONALE  
DELLO STIVICO  
NATIONAL PARK  
STILESER JOCH







PARCO NAZIONALE  
DELTA SILEVICIO  
NATIONAL PARK  
SILLESER JOCH





PARCO  
NAZIONALE  
DELLO  
STIVICO  
NATIONAL  
PARK

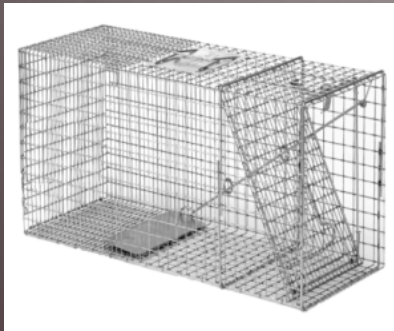


# Misurazione della temperatura in tana



# I conteggi: CMR

## Capture - Mark - Recapture

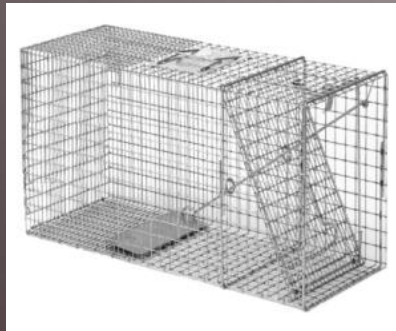


1°





# I conteggi: CMR



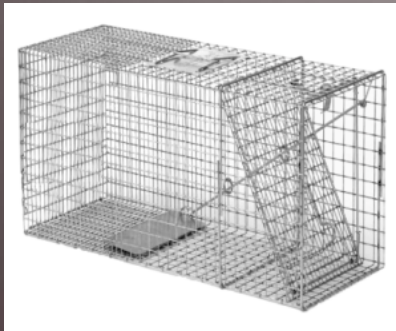
1°



2°



# I conteggi: CMR



**N**



**n**

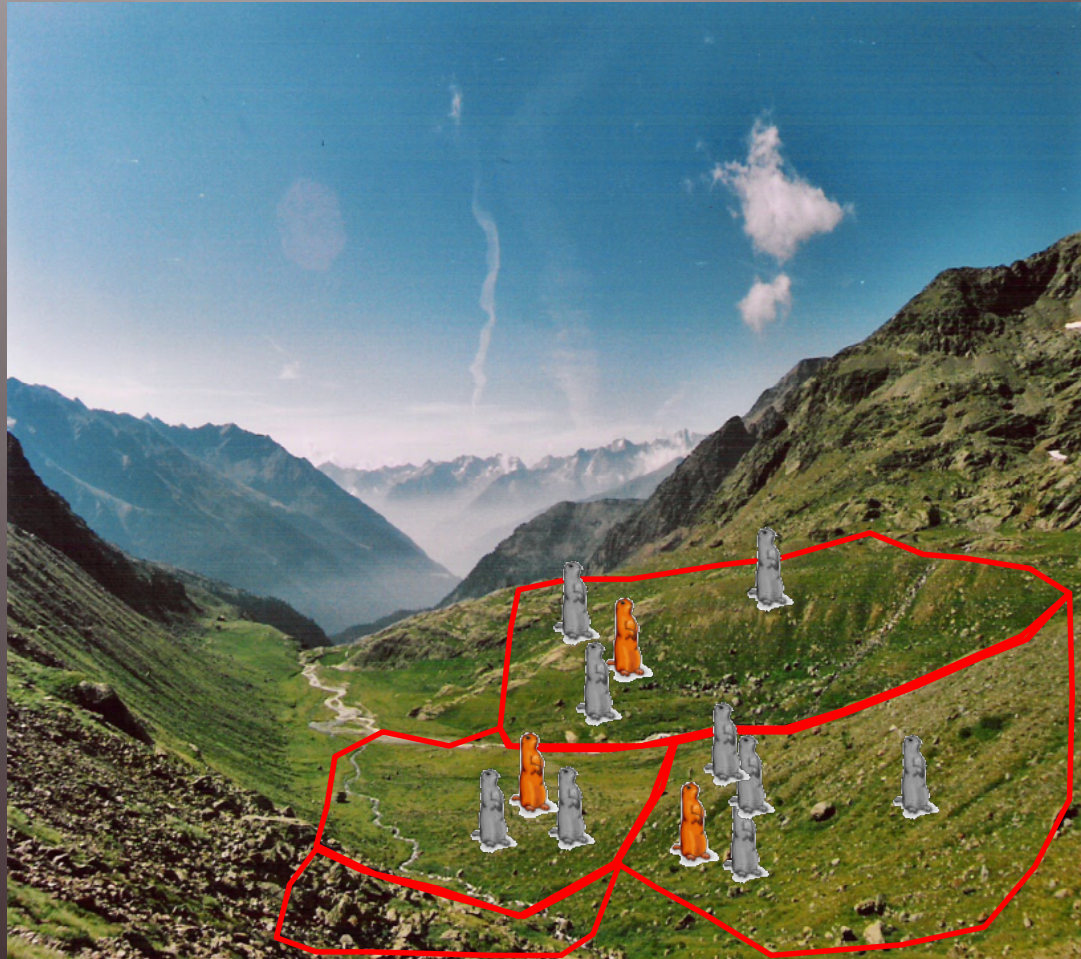


**1:3**



# I conteggi: MR

## Mark-Resight

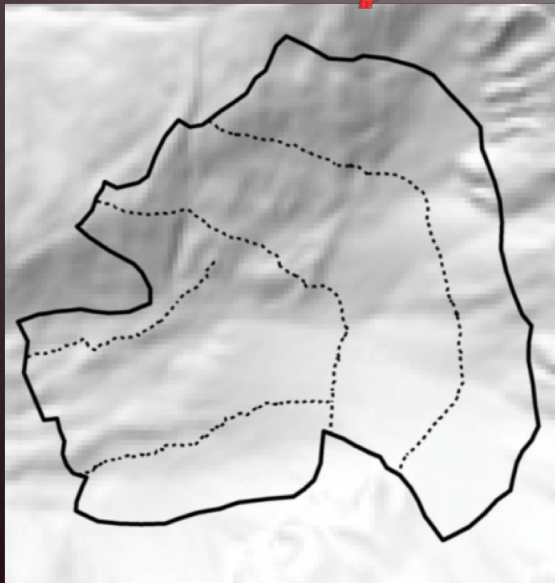


# I conteggi: MR con fototrappole



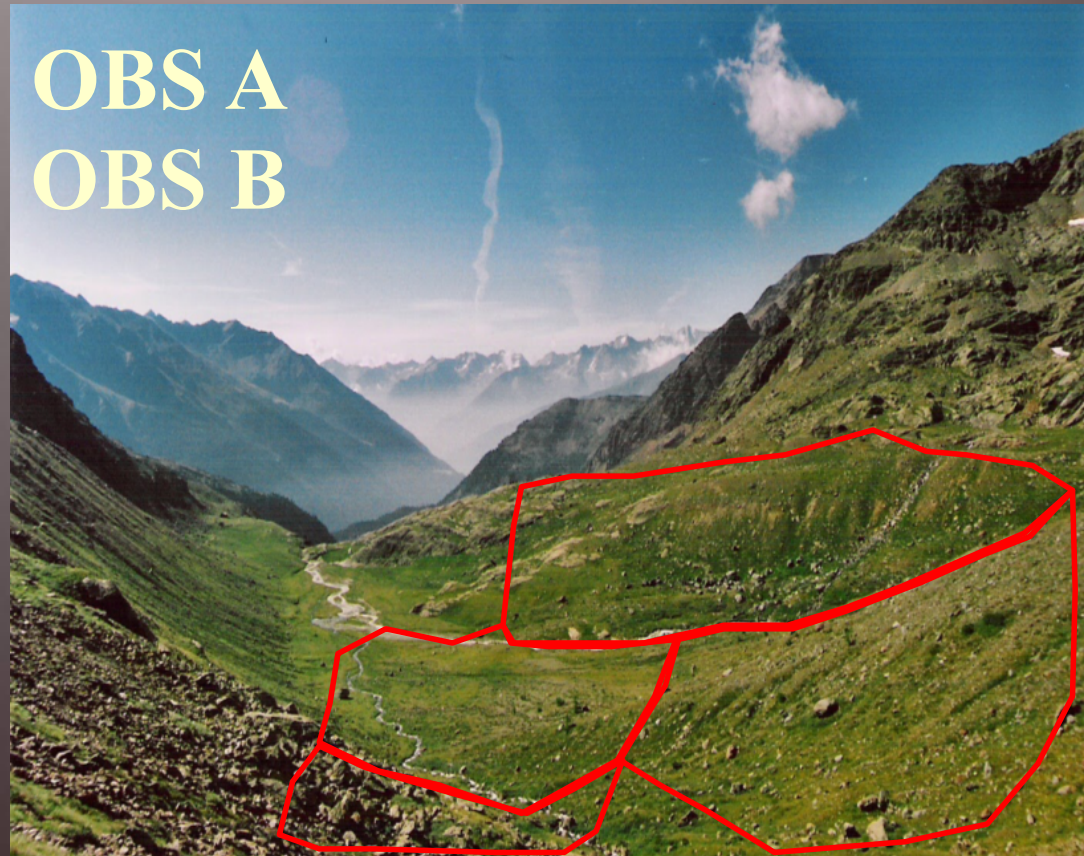
# I conteggi: DS

## Distance Sampling



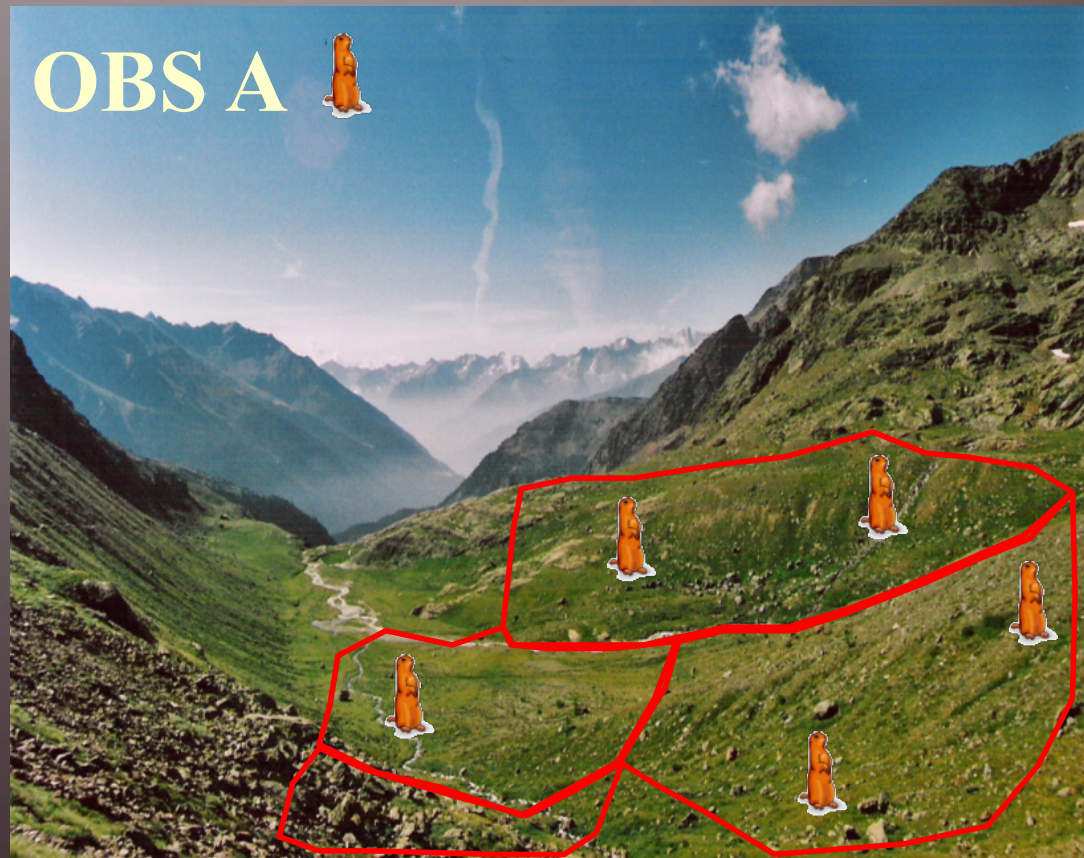
# I conteggi: DO

## Double Observer



# I conteggi: DO

## Double Observer



# I conteggi: DO

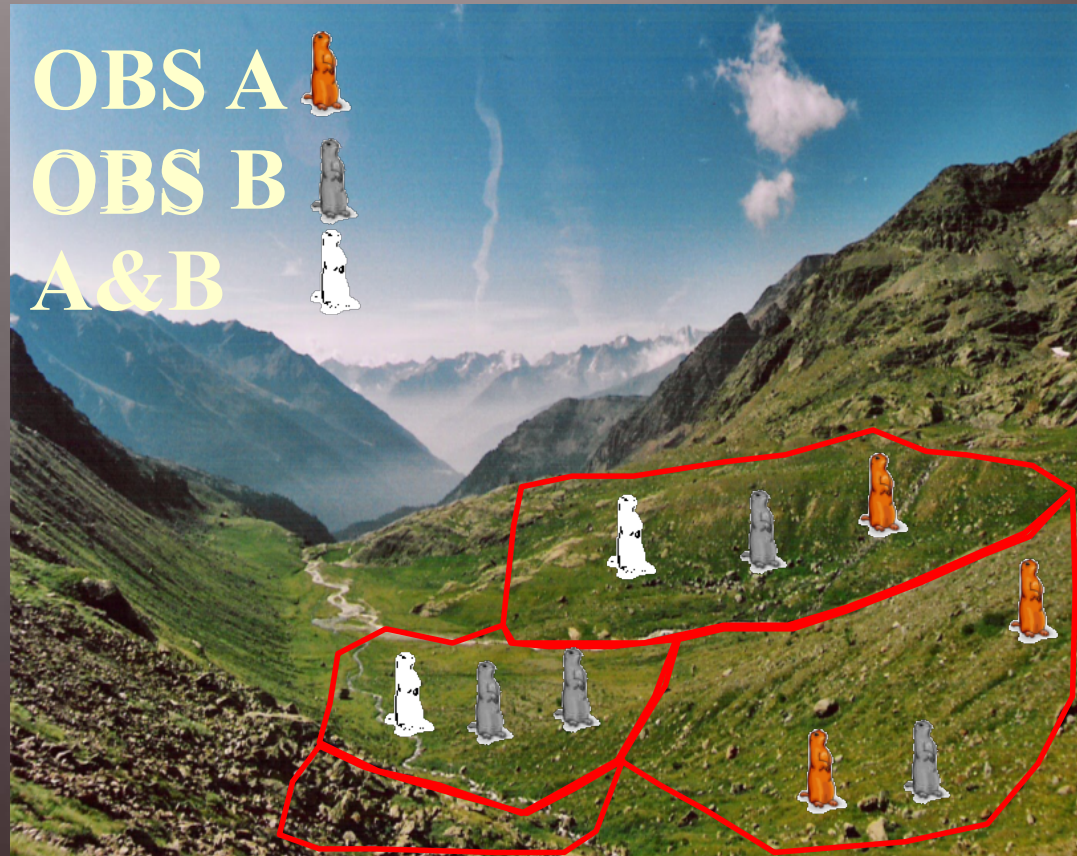
## Double Observer








# I conteggi: DO

## Double Observer

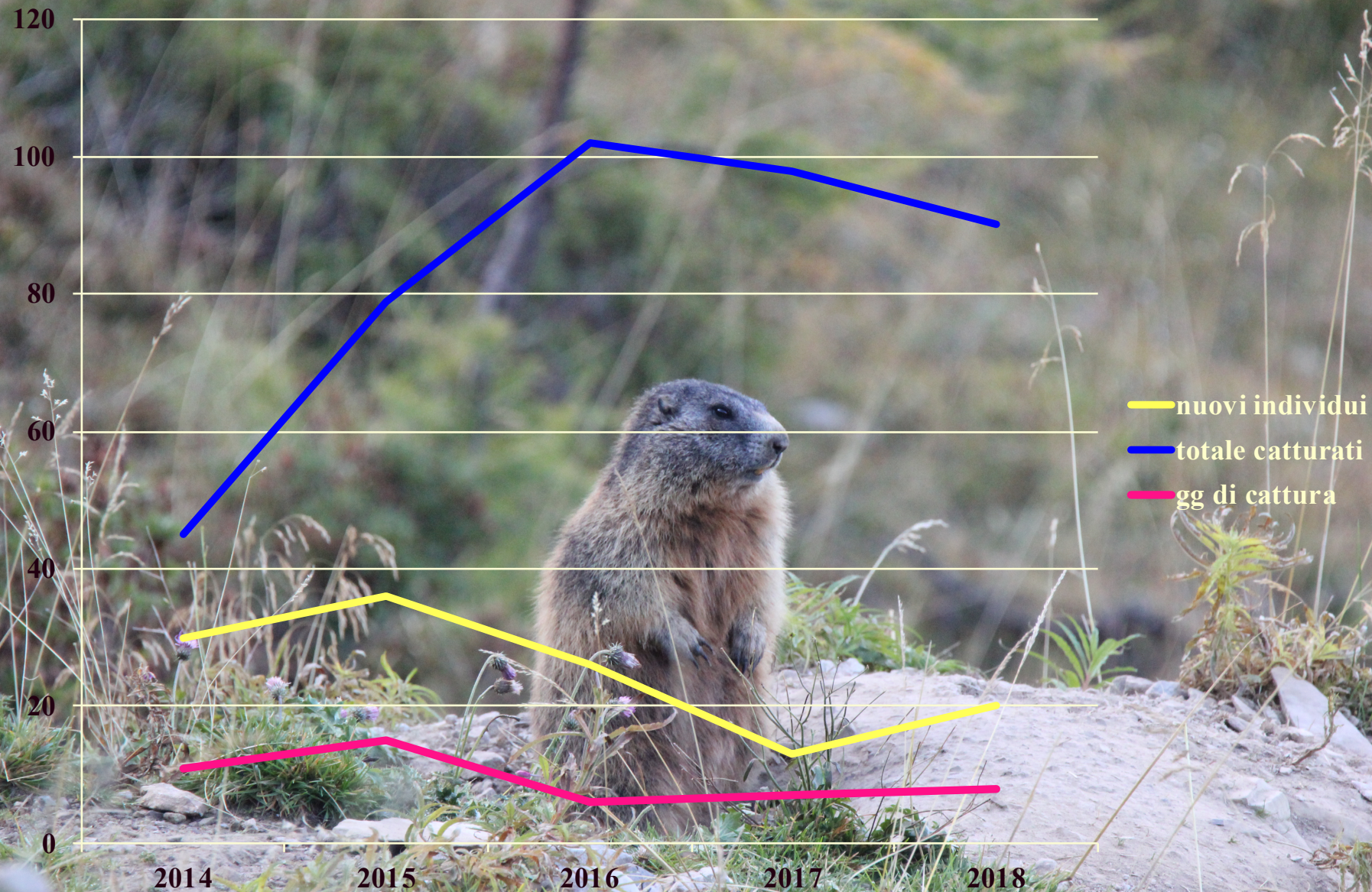


OBS A   
 OBS B   
 A&B 

A	B
1	1
0	1
1	0
1	1
0	1
0	1
1	0
0	1
1	0

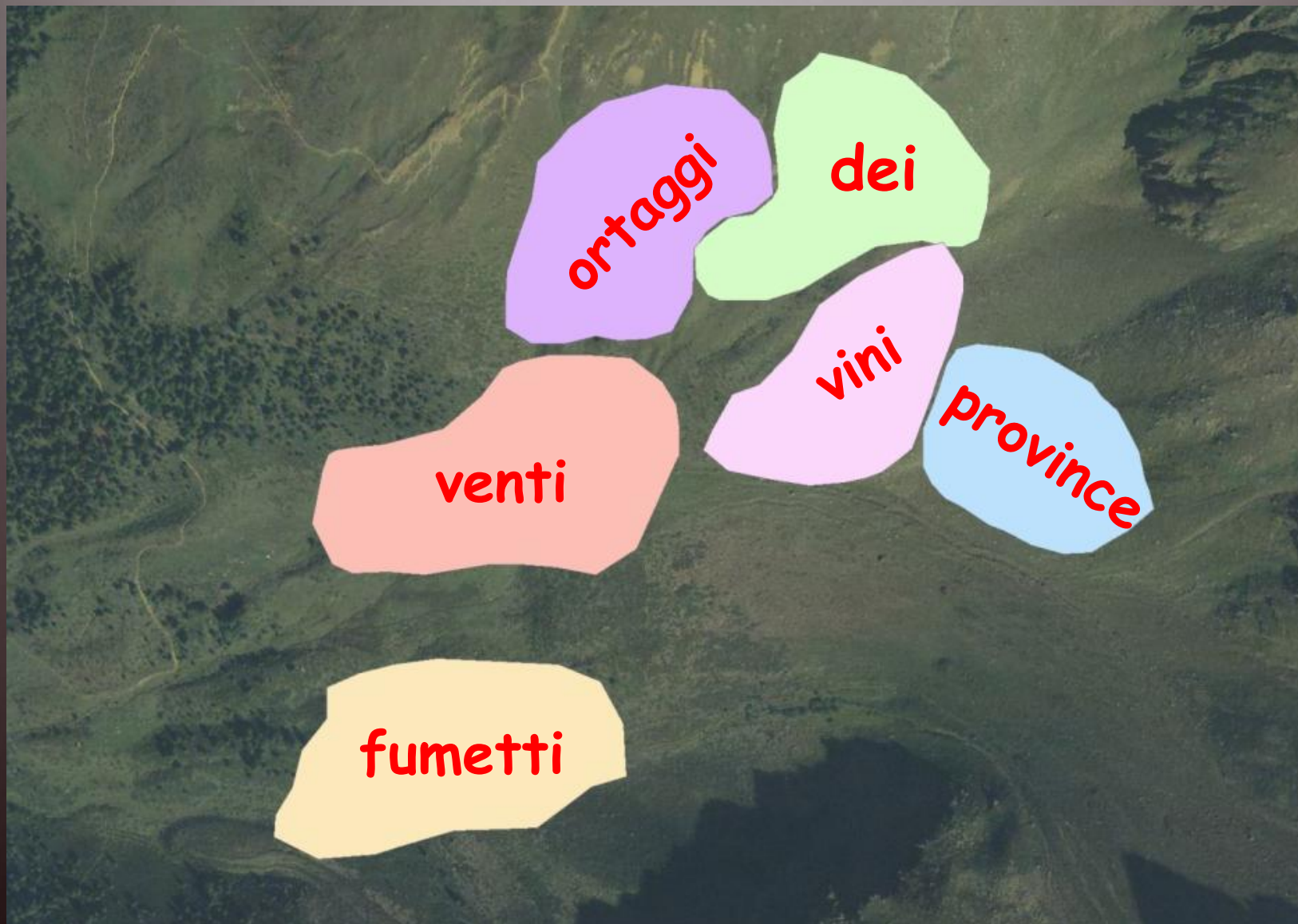
# Risultati

## Levi



# Risultati

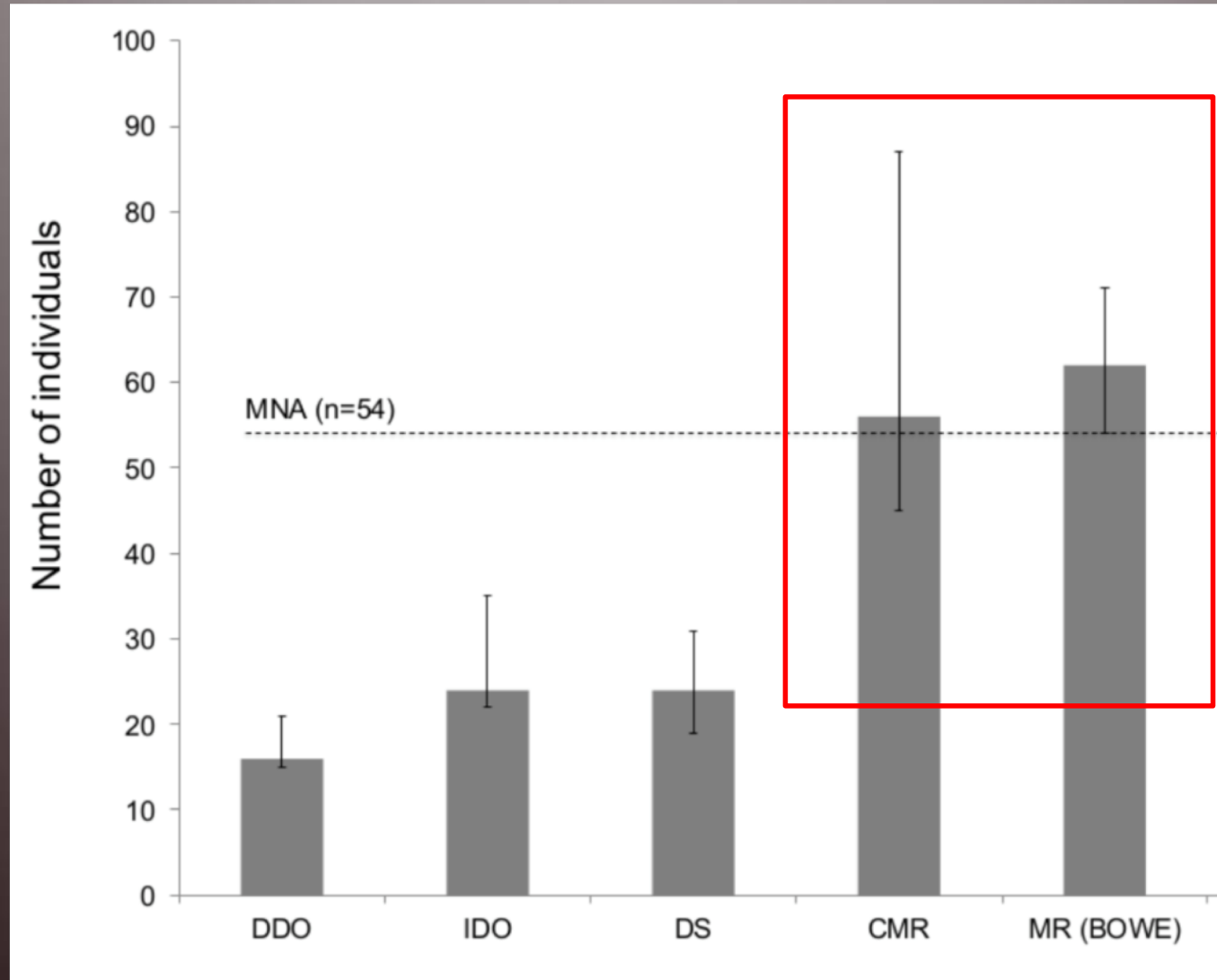
## Levi



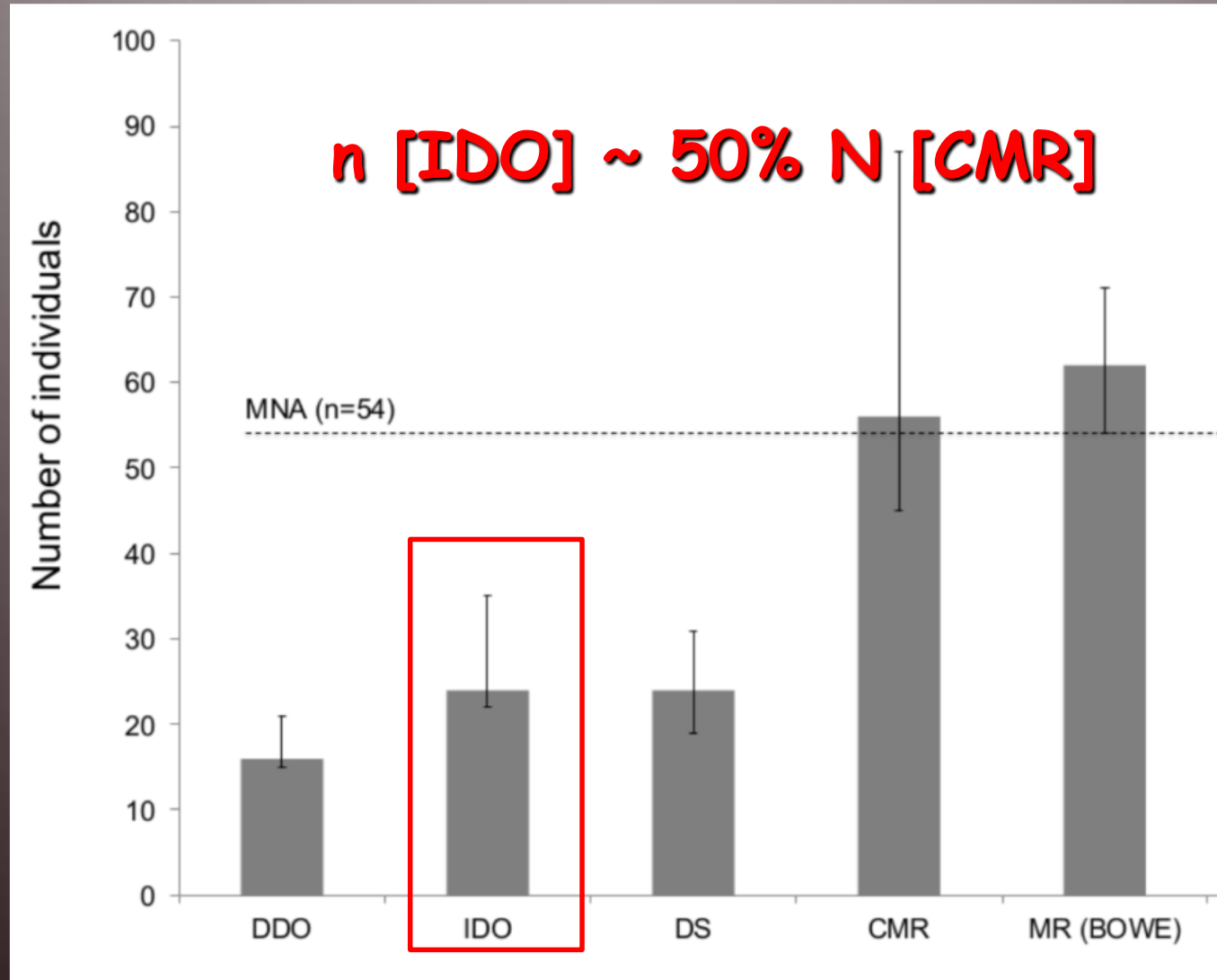
# Risultati

	<b>CMR</b>	<b>MR</b>	<b>DS</b>	<b>DDO</b>	<b>IDO</b>
Number of operators	2	2	2	2	2
Dates	7/5–14/5	25/5–4/6	3/8–13/8	30/6	4/7
Time	6–21	10–12 / 15–17	9–12 / 17–19	9–11	16–18
Number of days	8	4	6	1	1
Number of occasions	8	6	8	1	1
Sampling protocol	18 box-traps	4 sectors from points	4 line transects	4 sectors from points	4 sectors from points
Optical instruments	no	yes	yes	yes	yes
Marmots seen/captured	n=39	n=173	n=269	n=15	n=21

# Risultati



# Risultati



# Il futuro

**n [IDO] ~ 50% N [CMR]**

**ovunque**

**dati su sopravvivenza + parametri  
demografici a lungo termine**





# Chi ha fatto cosa

## Settore trentino

## Settore lombardo

- Catture e attività di campo

F. Zibordi, F. Rizzolli,  
M. Bertolini, CFP Peio (e Rabbi)

B. Sudolska, S. Giacomelli,  
A. Zanolì, E. Silvestri,  
R. Silevstri, A. Gugiatti

- Assistenza veterinaria

S. Tamanini, S. Giacomelli

S. Giacomelli

- Elaborazione dati

L. Corlatti, L. Pedrotti

- Supporto

N. Bragalanti, D. Moreschini,  
operai PNS

- Studenti e volontari

A. Danzi, T. Bacchilega,  
studenti IASMA





PARCO  
NAZIONALE  
DELLO  
STELVIO  
NATIONAL  
PARK  
SÜDSESER  
JOCH

**TI AVEVO PORTATO UN FIORE**



**..MA L'HO MANGIATO**

**Grazie per  
l'attenzione**